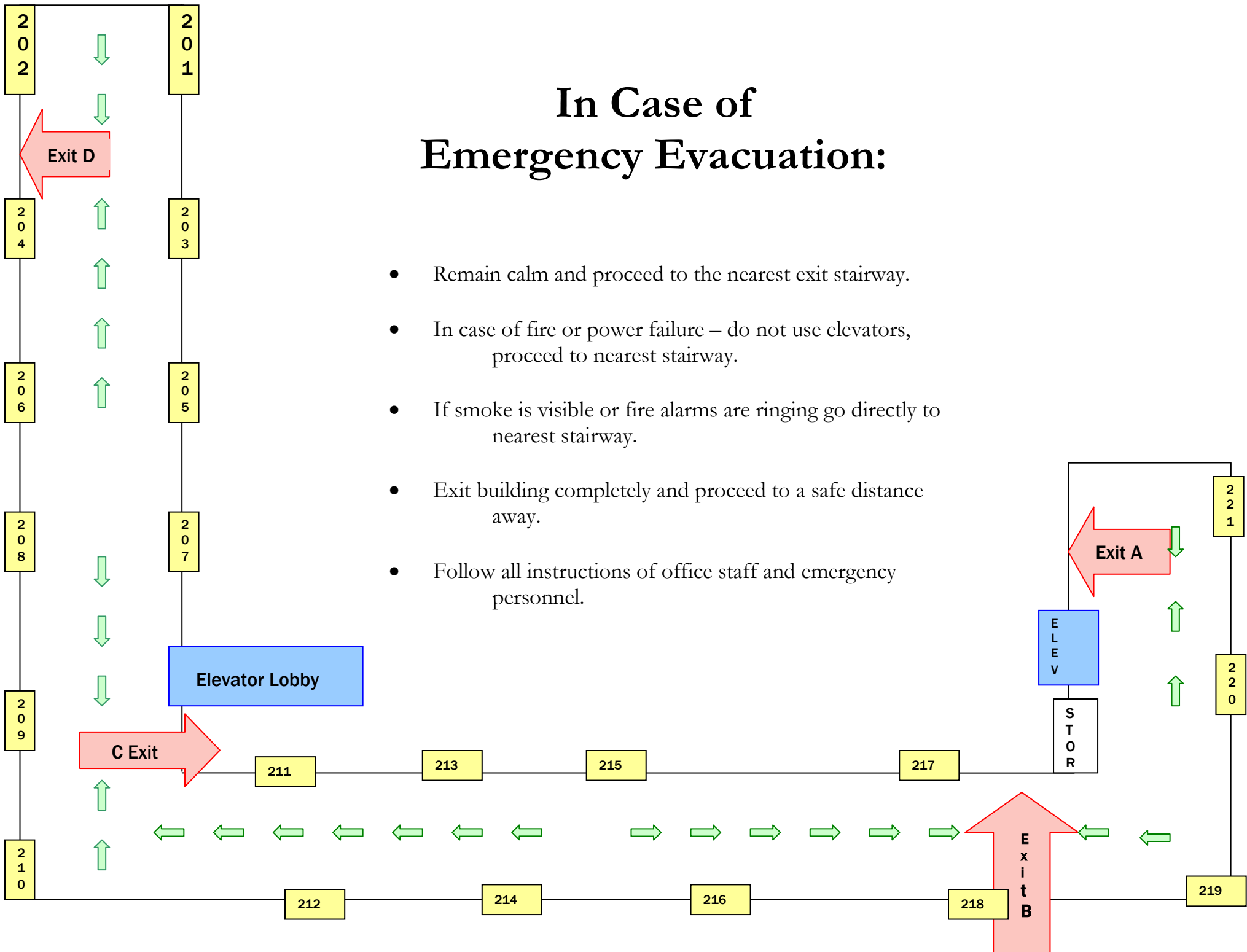


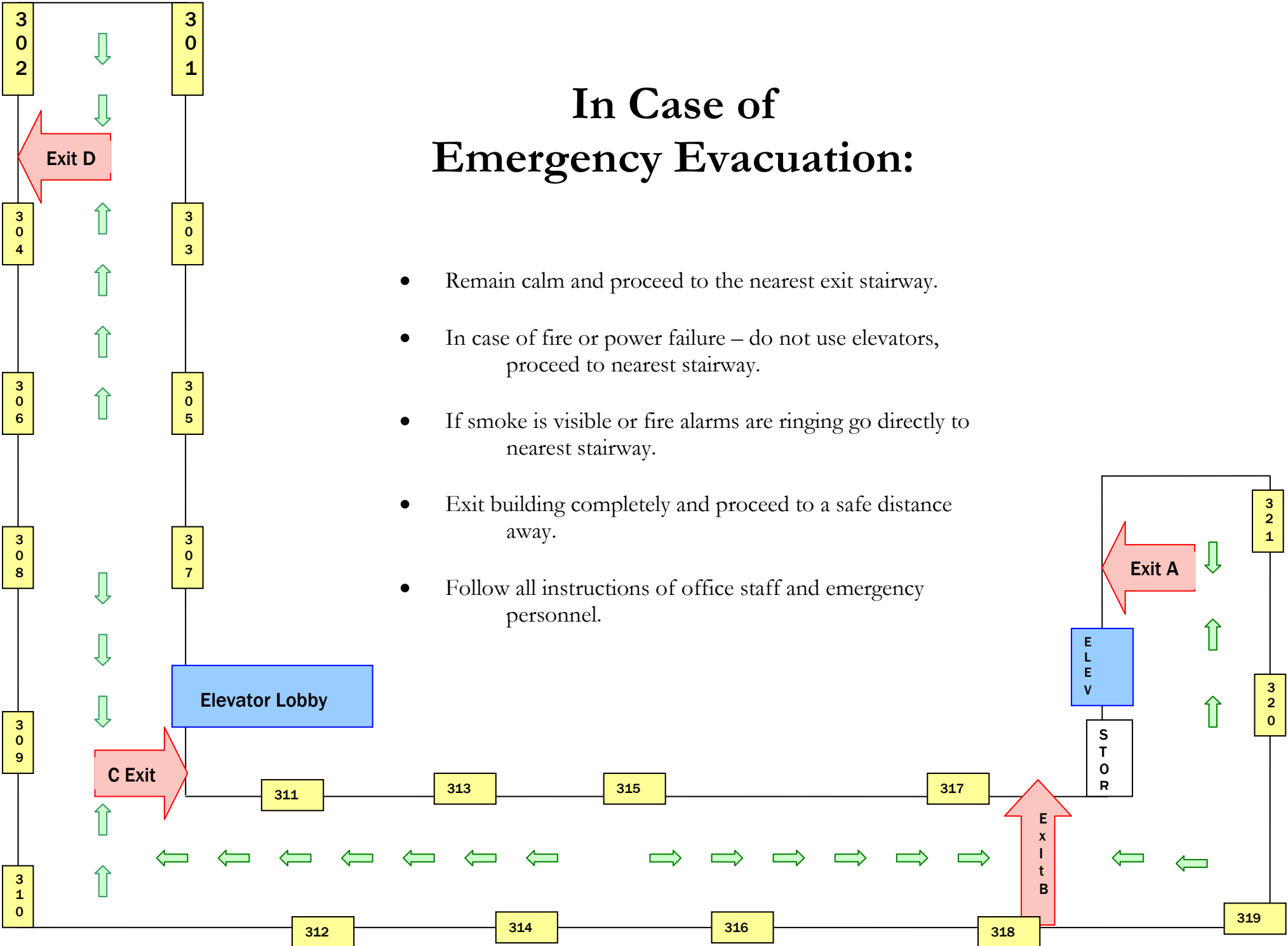
In Case of Emergency Evacuation:

- Remain calm and proceed to the nearest exit stairway.
- In case of fire or power failure – do not use elevators, proceed to nearest stairway.
- If smoke is visible or fire alarms are ringing go directly to nearest stairway.
- Exit building completely and proceed to a safe distance away.
- Follow all instructions of office staff and emergency personnel.



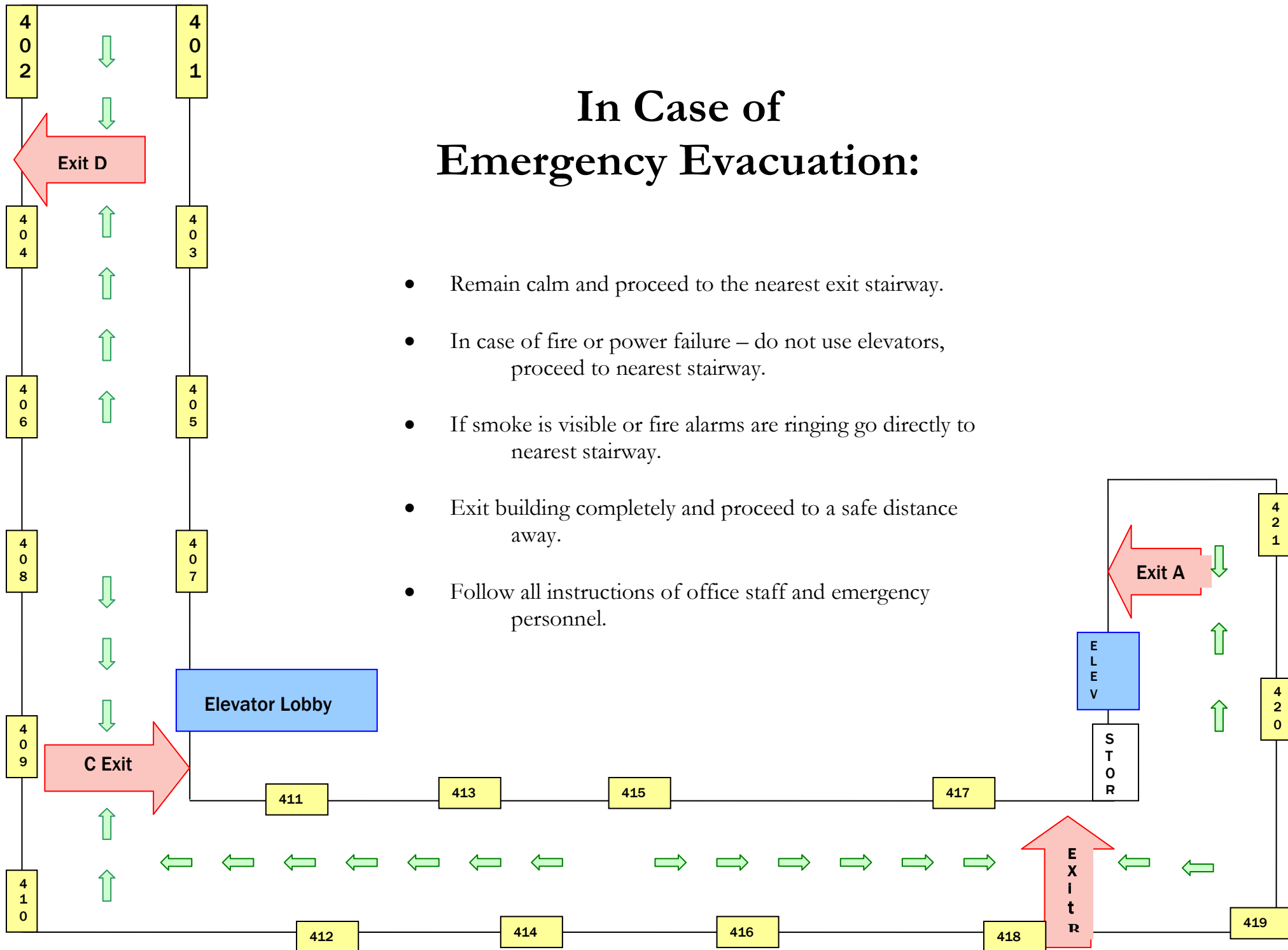
In Case of Emergency Evacuation:

- Remain calm and proceed to the nearest exit stairway.
- In case of fire or power failure – do not use elevators, proceed to nearest stairway.
- If smoke is visible or fire alarms are ringing go directly to nearest stairway.
- Exit building completely and proceed to a safe distance away.
- Follow all instructions of office staff and emergency personnel.



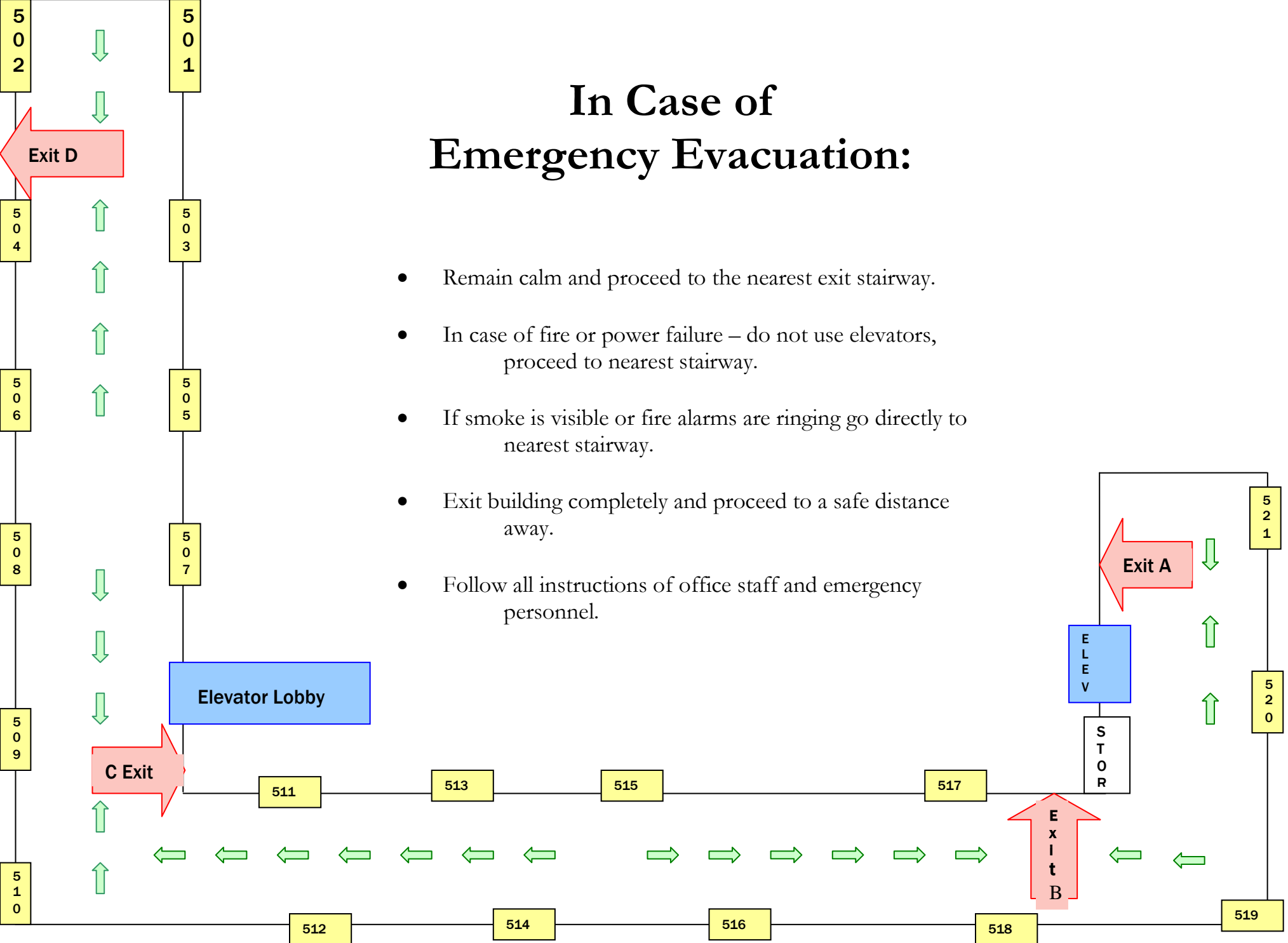
In Case of Emergency Evacuation:

- Remain calm and proceed to the nearest exit stairway.
- In case of fire or power failure – do not use elevators, proceed to nearest stairway.
- If smoke is visible or fire alarms are ringing go directly to nearest stairway.
- Exit building completely and proceed to a safe distance away.
- Follow all instructions of office staff and emergency personnel.



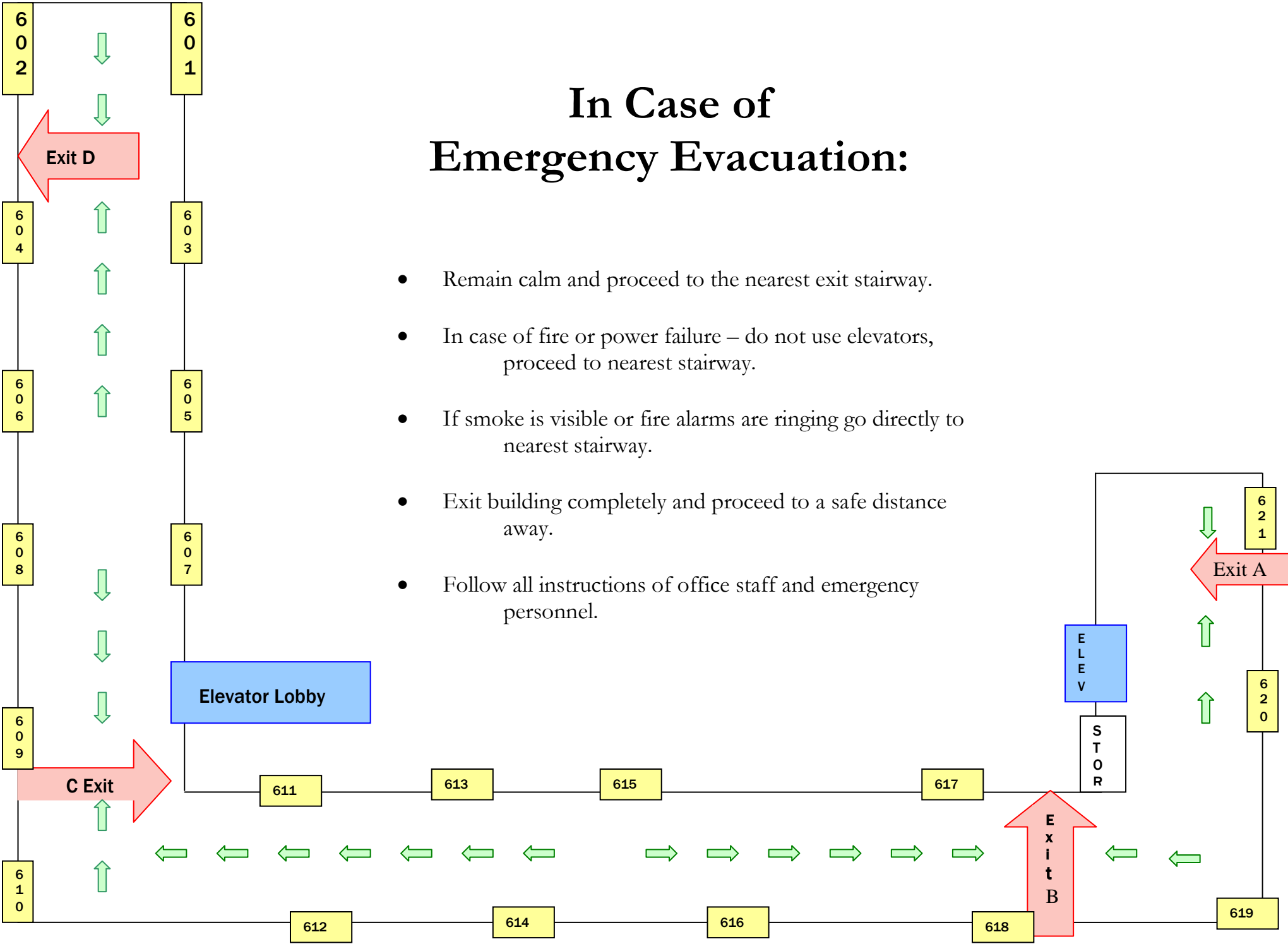
In Case of Emergency Evacuation:

- Remain calm and proceed to the nearest exit stairway.
- In case of fire or power failure – do not use elevators, proceed to nearest stairway.
- If smoke is visible or fire alarms are ringing go directly to nearest stairway.
- Exit building completely and proceed to a safe distance away.
- Follow all instructions of office staff and emergency personnel.



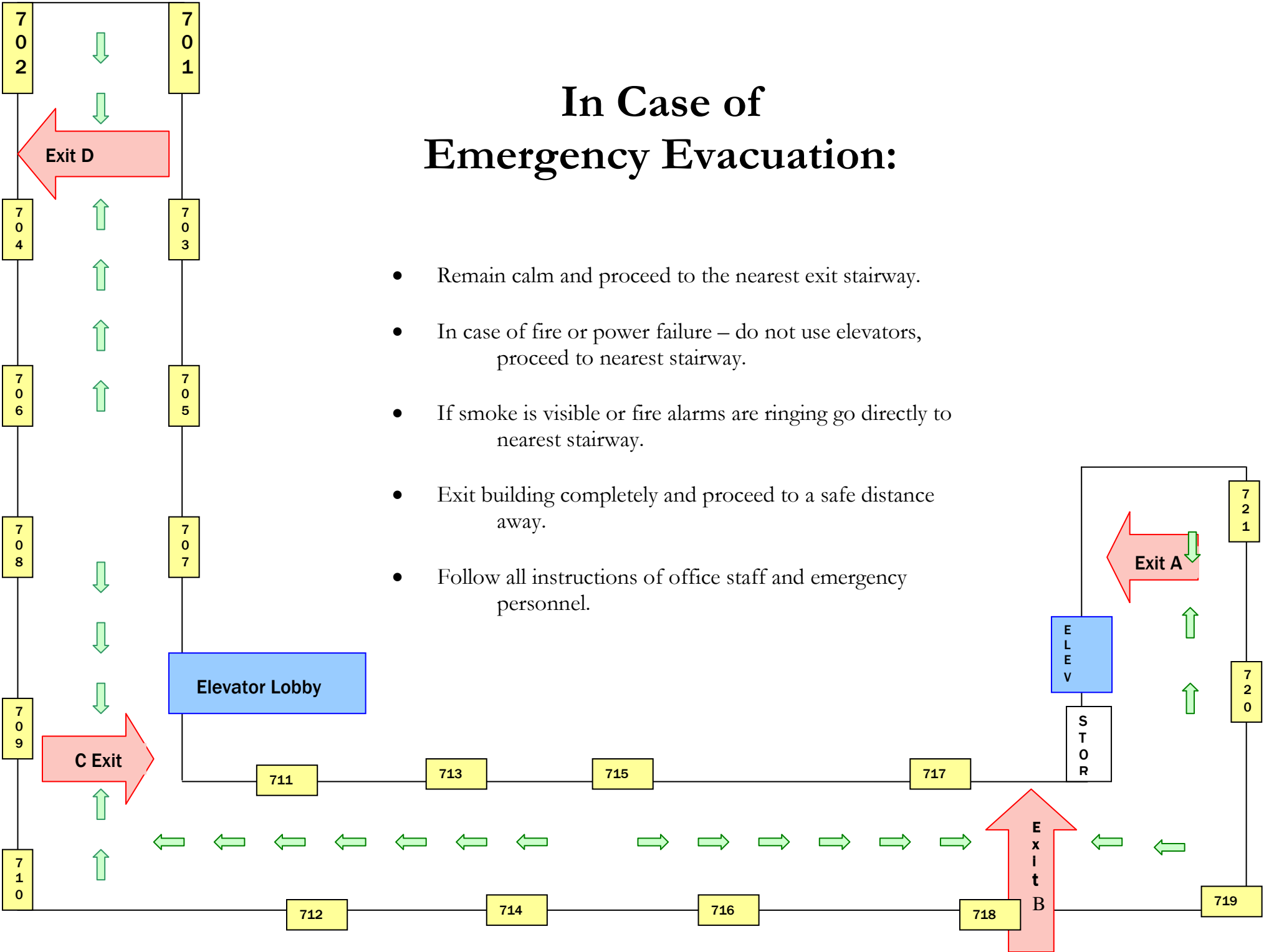
In Case of Emergency Evacuation:

- Remain calm and proceed to the nearest exit stairway.
- In case of fire or power failure – do not use elevators, proceed to nearest stairway.
- If smoke is visible or fire alarms are ringing go directly to nearest stairway.
- Exit building completely and proceed to a safe distance away.
- Follow all instructions of office staff and emergency personnel.



In Case of Emergency Evacuation:

- Remain calm and proceed to the nearest exit stairway.
- In case of fire or power failure – do not use elevators, proceed to nearest stairway.
- If smoke is visible or fire alarms are ringing go directly to nearest stairway.
- Exit building completely and proceed to a safe distance away.
- Follow all instructions of office staff and emergency personnel.



In Case of Emergency Evacuation:

- Remain calm and proceed to the nearest exit stairway.
- In case of fire or power failure – do not use elevators, proceed to nearest stairway.
- If smoke is visible or fire alarms are ringing go directly to nearest stairway.
- Exit building completely and proceed to a safe distance away.
- Follow all instructions of office staff and emergency personnel.

